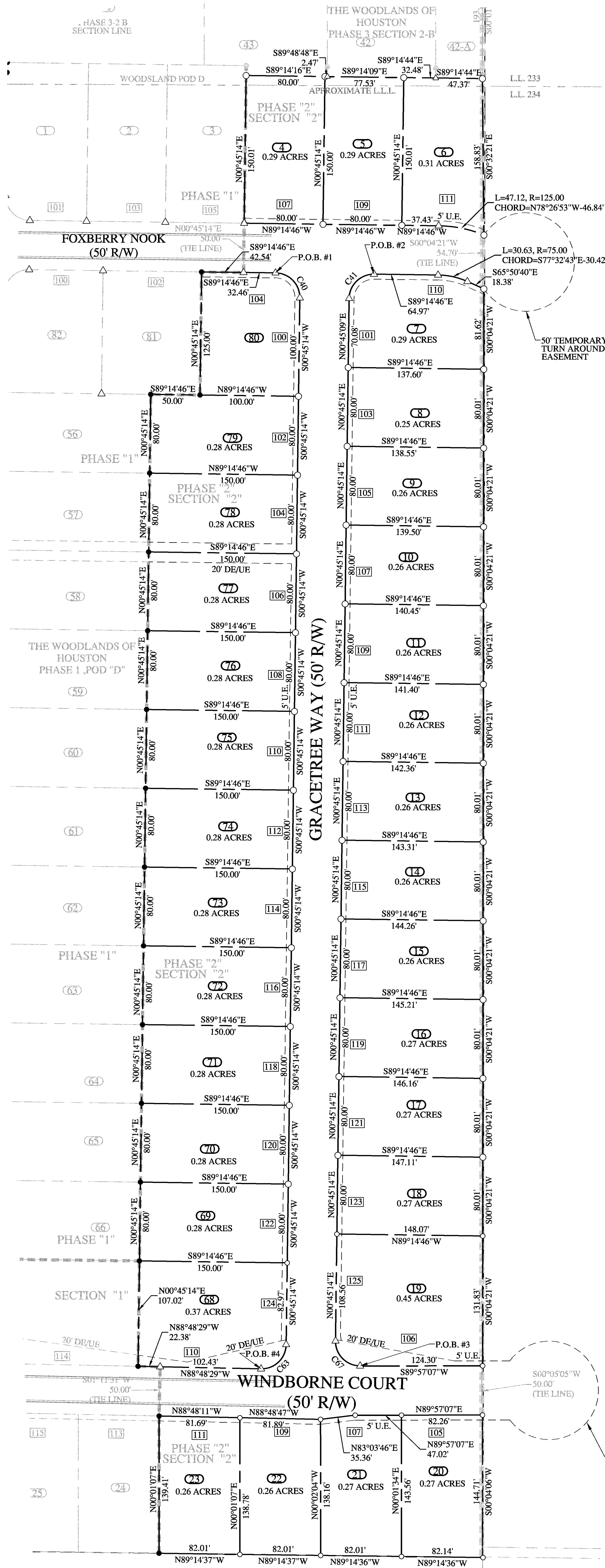


LEGEND

- 1/2" REBAR SET
1/2" REBAR FOUND UNLESS OTHERWISE NOTED
OPEN TOP PIPE FOUND
CALCULATED CORNER
CONCRETE MONUMENT FOUND
RIGHT OF WAY
BUILDING LINE
PROPERTY LINE
DRAINAGE EASEMENT
UTILITIES EASEMENT
SANITARY SEWER EASEMENT
MANHOLE
CATCH BASIN
JUNCTION BOX
DROP INLET
HEADWALL
ACRE
LAND LOT LINE
FIRE HYDRANT
FENCE LINE
FINISH FLOOR ELEVATION
POWER LINE
POWER POLE
CENTER LINE
RADIUS
REINFORCED CONCRETE PIPE
CORRUGATED METAL PIPE
WATER VALVE
WATER METER
SOW OR FORMERLY



SURVEYOR'S CERTIFICATION
IT IS CERTIFIED THAT THIS PLAT IS TRUE AND CORRECT AND WAS PREPARED FROM AN ACTUAL SURVEY OF THE PROPERTY BY ME OR UNDER MY SUPERVISION...

BY (MARTY A. McLEOD)
REGISTERED GEORGIA LAND SURVEYOR NUMBER - 2991

I CERTIFY THAT THE CONSTRUCTION AND INSTALLATION OF THE STREETS, DRAINAGE, UTILITIES AND OTHER IMPROVEMENTS HAVE BEEN COMPLETED IN ACCORDANCE WITH THE REGULATIONS AND SPECIFICATIONS OF THE CITY OF PERRY, GA AND COMPLIES WITH REQUIREMENTS OF THE PRELIMINARY PLAT APPROVED BY THE PLANNING COMMISSION...

Bryan Wood
DIRECTOR OF COMMUNITY DEVELOPMENT
CITY OF PERRY, GEORGIA

OWNER'S CERTIFICATION
STATE OF GEORGIA, COUNTY OF HOUSTON
THE UNDERSIGNED CERTIFIES THAT HE IS THE OWNER OF THE LAND SHOWN ON THIS PLAT AND ACKNOWLEDGES THIS PLAT AND ALLOTMENT TO BE HIS FREE ACT AND DEED AND DEDICATES TO PUBLIC USE FOREVER ALL AREAS SHOWN OR INDICATED ON THIS PLAT AS STREETS, ALLEYS, EASEMENTS OR PARKS.

NOTES:
THIS PROPERTY IS SUBJECT TO ANY RESTRICTIONS OR EASEMENTS THAT MAY NOT BE SHOWN HEREON.

THE FIELD DATA UPON WHICH THIS PLAT IS BASED WAS OBTAINED USING USING A TOPCON GTS 2112 AND HAS A LINEAR PRECISION RATIO OF ONE FT. IN 24,000 FEET AND AN ANGULAR ERROR OF 03 SECONDS PER ANGLE AND WAS ADJUSTED USING THE COMPASS RULE. THIS PLAT HAS BEEN CHECKED FOR MATHEMATICAL ACCURACY AND CLOSES WITHIN ONE FT. IN 352,948 FEET.

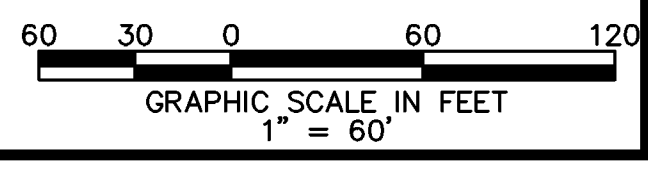
ACCORDING TO INFORMATION SHOWN ON F.E.M.A. COMMUNITY PANEL NUMBER 13153 C 0095 E, EFFECTIVE DATE SEPTEMBER 28, 2007, NO PORTION OF THIS PROPERTY IS LOCATED IN A F.I.A. FLOOD HAZARD ZONE "A".

SETBACKS:
FRONT: 20'
BACK: 20'
SIDE: 5'

Table with 5 columns: CURVE #, LENGTH, RADIUS, CHORD LENGTH, CHORD BEARING. Rows include curves C40 through C67.

Type: GEORGIA STANDARD PLATS
Recorded: 1/5/2021 3:14:00 PM
Fee Amt: \$10.00 Page 1 of 1
BK 82 PG 121

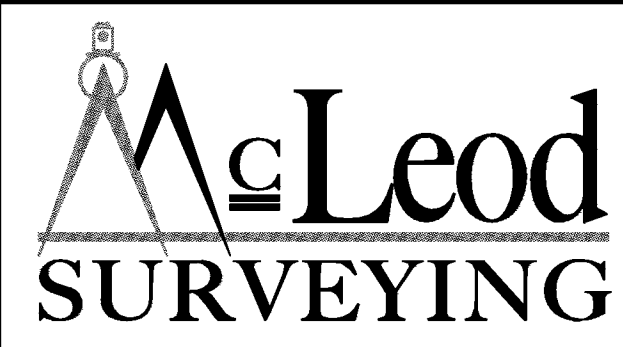
THIS PLAT SUPERCEDES PLAT RECORDED IN P.B. 82, PG. 87



S-1.1
REVISIONS:
NO. DATE DESCRIPTION
1 1/4/21 ADDED NORTH ARROW, ADDED P.O.B., ADJUSTED SETBACKS

SURVEY FOR:
THE WOODLANDS OF HOUSTON
POD "D", PHASE "2" SECTION "2"
PERRY GEORGIA

COUNTY: HOUSTON
LL DISTRICT: 233 & 234 / 107H
DWG: POD D PHASE 2
DATE: 10/29/2020
SCALE: 1"=60'
JOB NO.: 16-0652C



906 Ball Street
Perry, Georgia 31069
office (478) 224-7070
fax (478) 224-7072
WWW.MCLEODSURVEYING.COM

